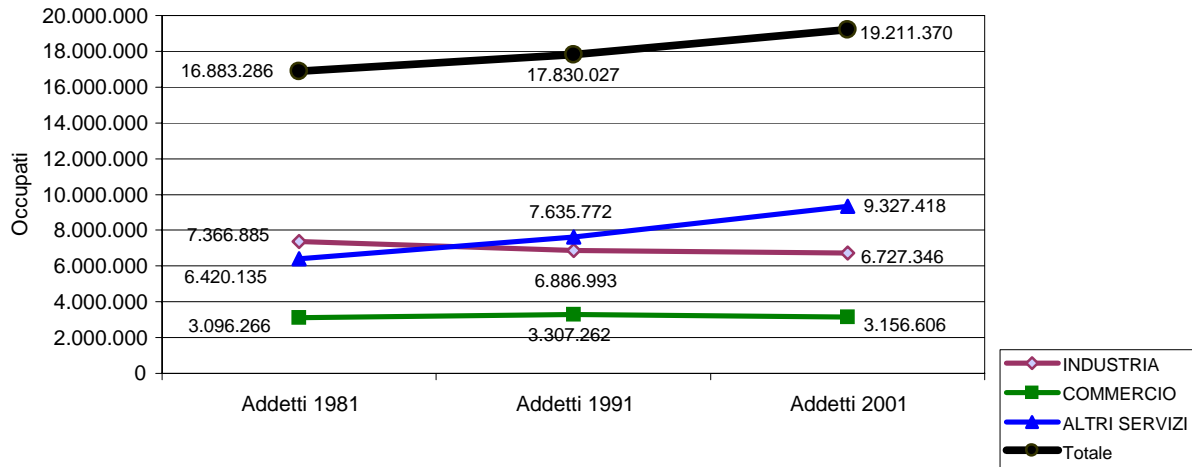
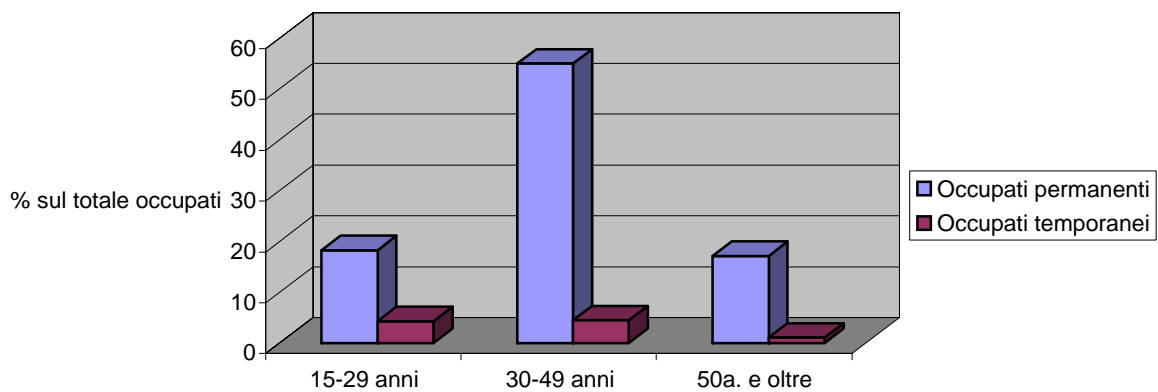


Appendice a Il Lavoro a Ostiglia

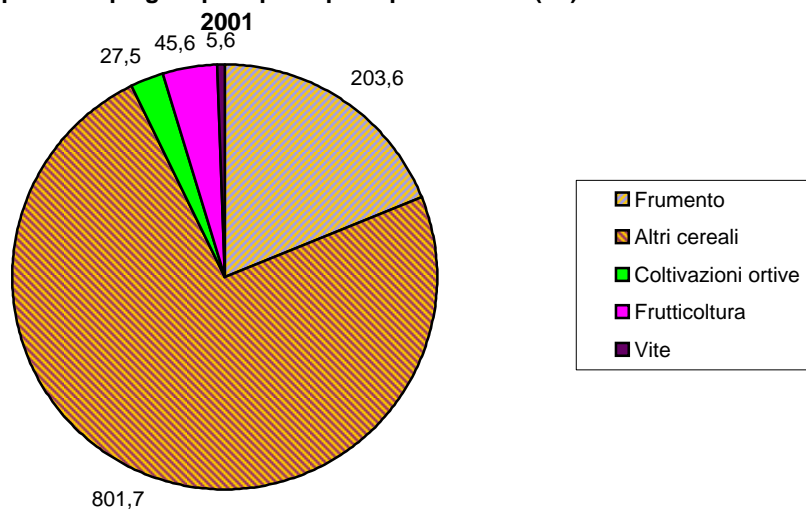
Graf. 1 - Andamento occupazione in Italia tra il 1981 e il 2001
ISTAT



Graf. 2 - Tipo di occupazione per classi di età in Italia
ISTAT 2001



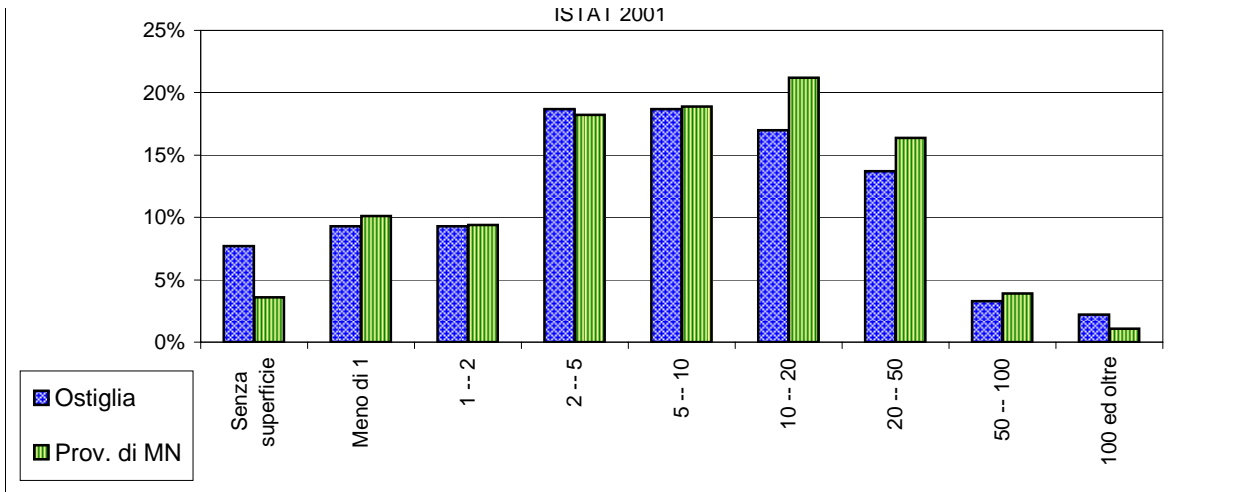
Graf. 3 - Ostiglia - Superfici impiegate per i principali tipi di coltura (ha) - ISTAT



Graf. 4 - Ostiglia - Dimensioni delle Aziende Agricole
ISTAT 2001

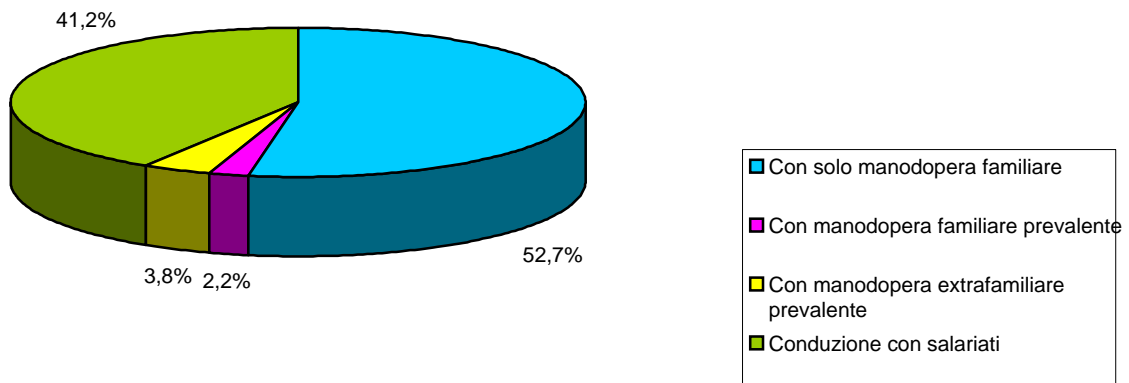
25%

Appendice a Il Lavoro a Ostiglia

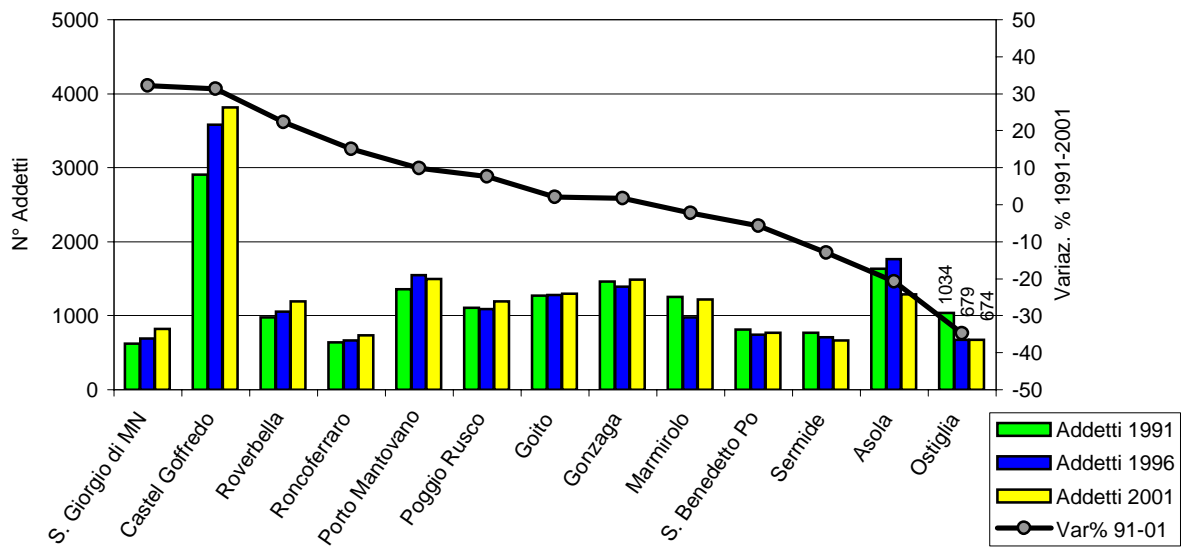


Graf. 5 - Ostiglia - Tipo di conduzione delle aziende agricole (% del totale aziende)

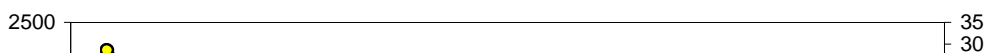
ISTAT 2001



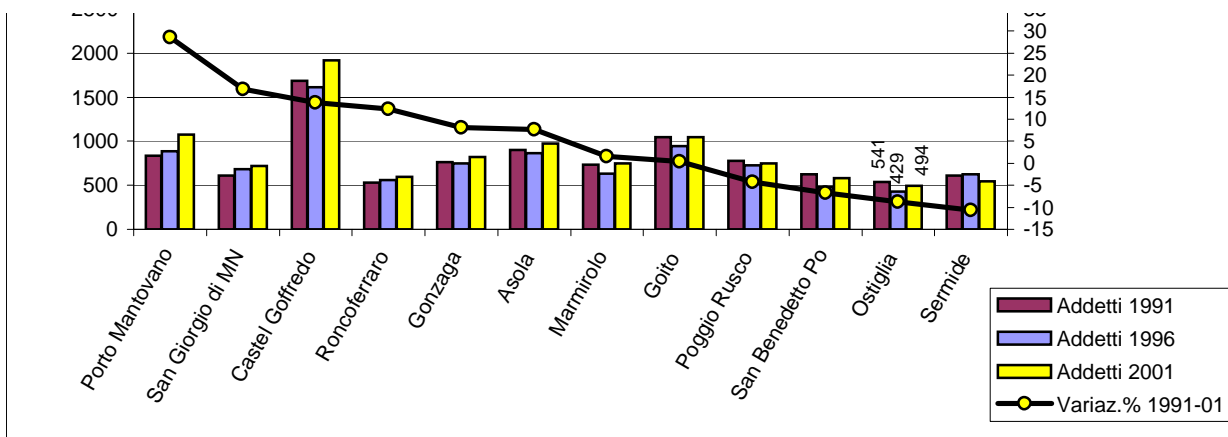
Graf. 6 - ADDETTI INDUSTRIA 1991-96-2001 (ISTAT)



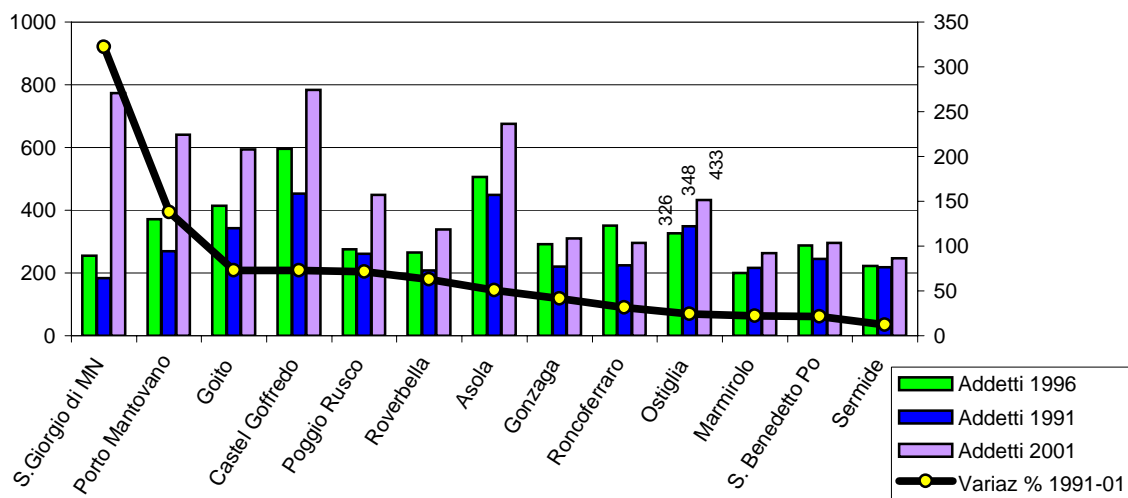
Graf. 7 - Addetti Imprese artigiane 1991-96-2001 (fonte: ISTAT)



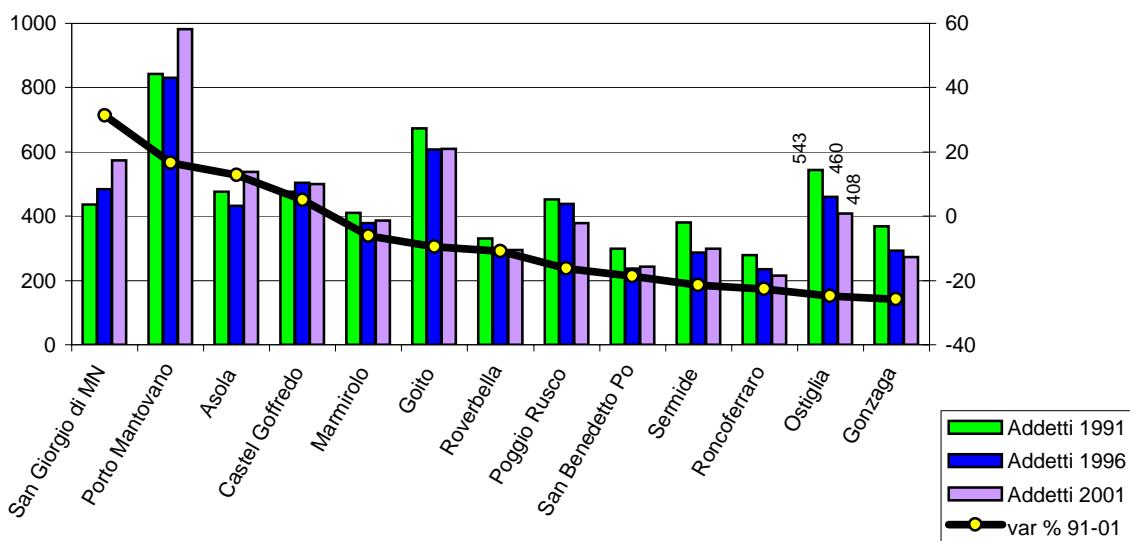
Appendice a Il Lavoro a Ostiglia



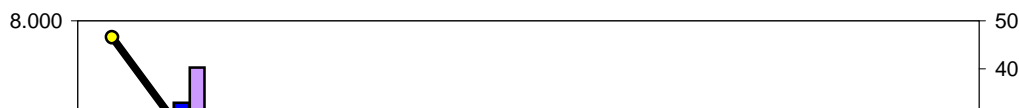
Graf. 8 - ALTRI SERVIZI - Addetti 1991-96-2001 (ISTAT)



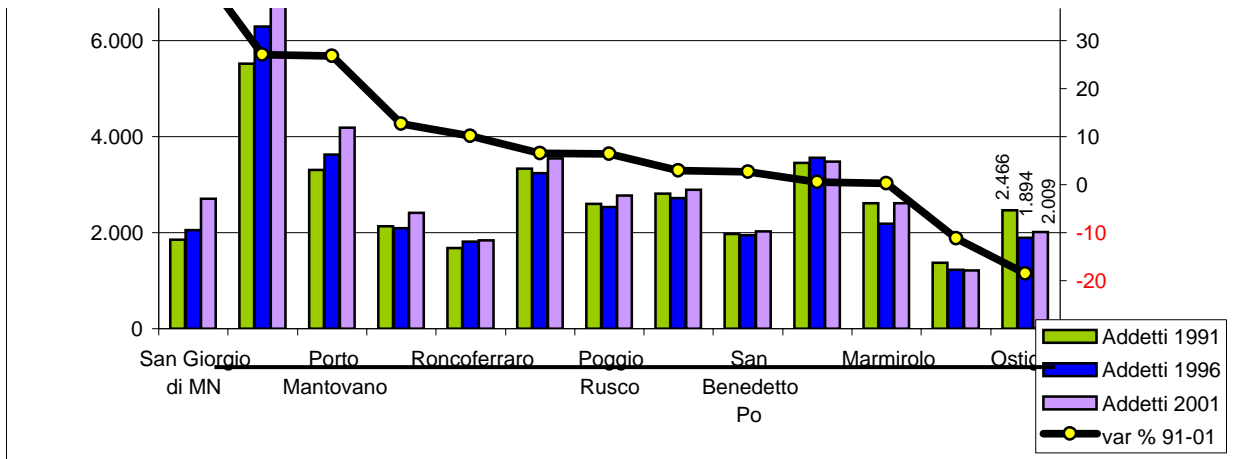
Graf. 9 - ADDETTI AL COMMERCIO 1991-96-2001 (ISTAT)



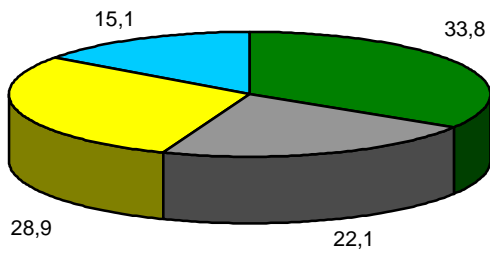
Graf. 10 - Occupati complessivi (Industria, Artigianato, Commercio, Altri servizi) 1991-96-2001 (Fonte: ISTAT)



Appendice a Il Lavoro a Ostiglia

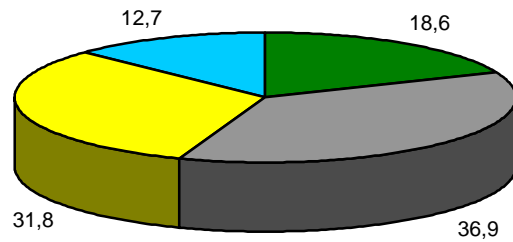


Graf. 11 - Ostiglia - % Addetti Istat 2001



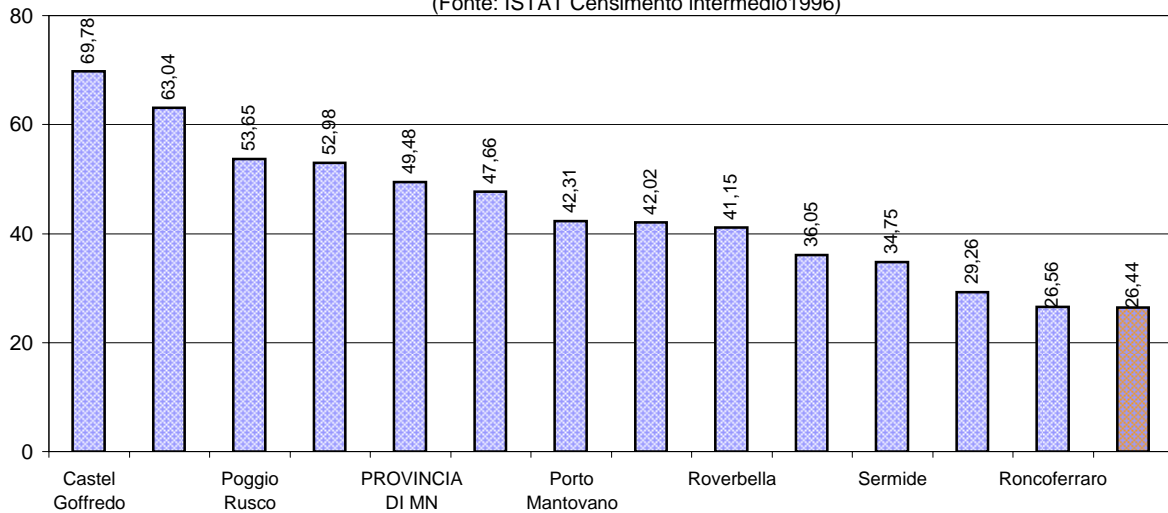
■ INDUSTRIA ■ COMMERCIO
■ ALTRI SERVIZI ■ DELLE ISTITUZIONI

Graf. 12 - Ostiglia - % Aziende Istat 2001

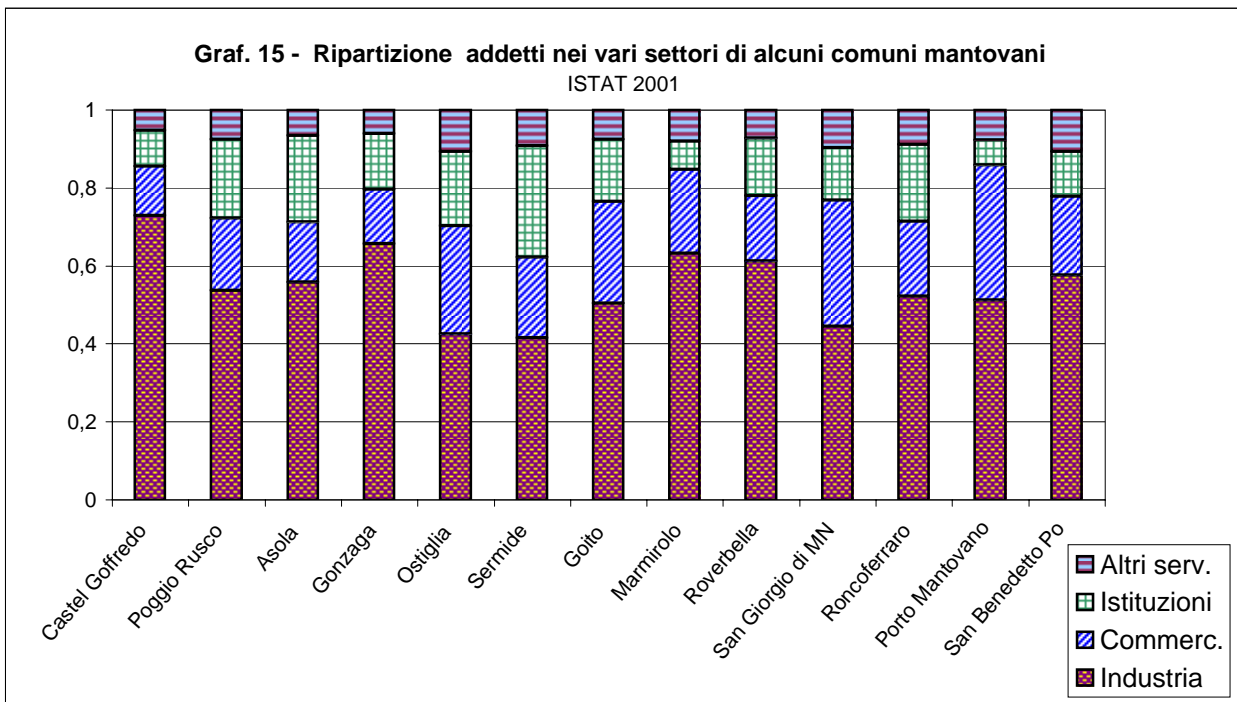
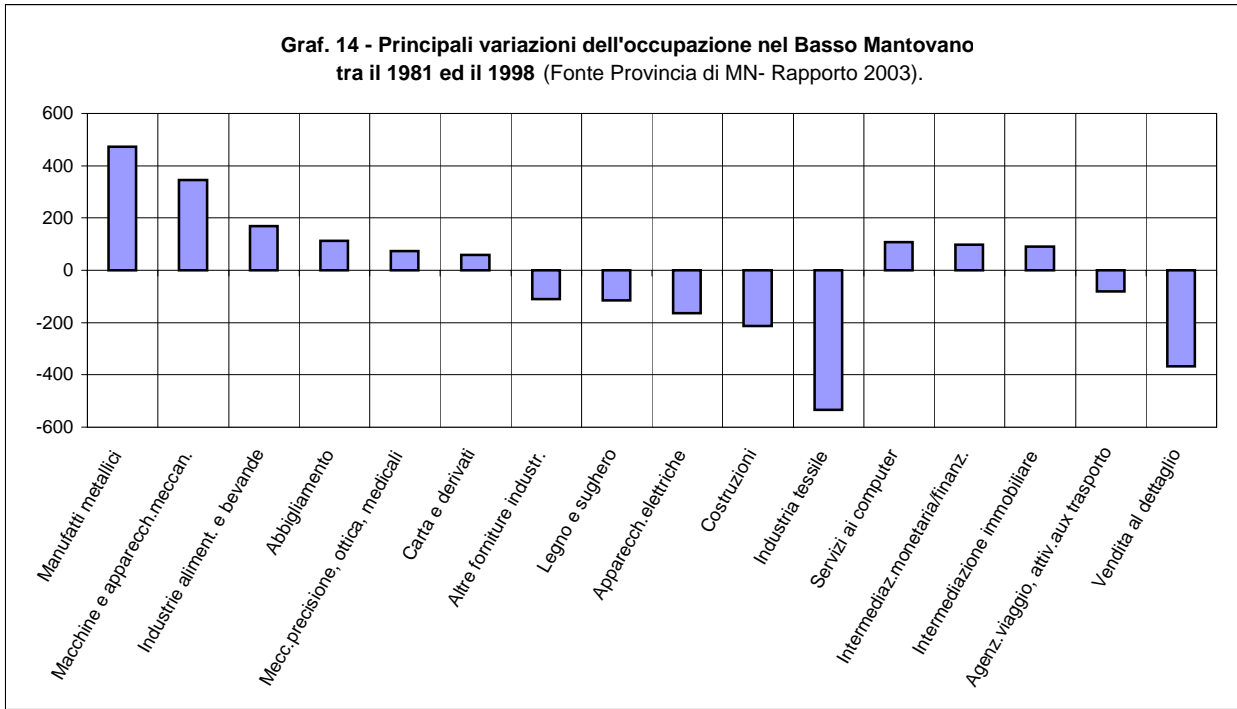


■ INDUSTRIA ■ COMMERCIO
■ ALTRI SERVIZI ■ DELLE ISTITUZIONI

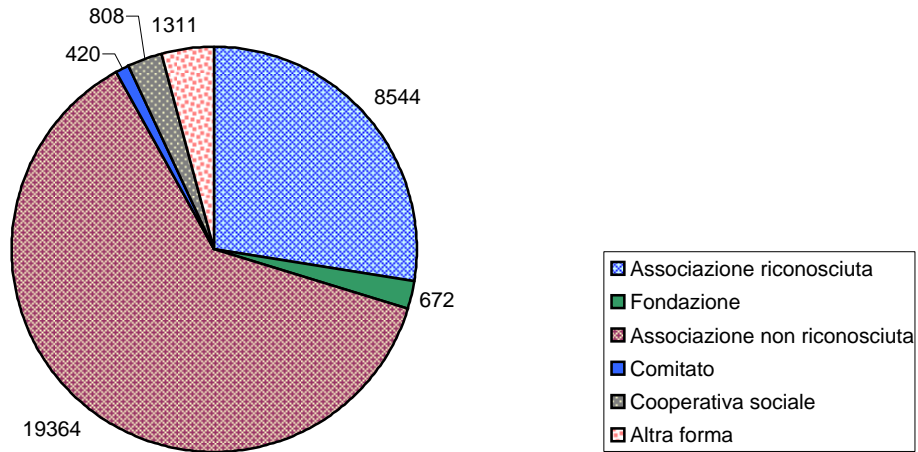
Graf. 13 - Indice Industrializzazione manifatturiera: N° addetti ogni 100 addetti complessivi
(Fonte: ISTAT Censimento intermedio 1996)



Appendice a Il Lavoro a Ostiglia



Graf. 16 - LOMBARDIA - FORME GIURIDICHE ATTIVITA' NONPROFIT
 fonte: ISTAT 2000



Graf. 17 - LOMBARDIA - N° ADDETTI PER SCOPI DELLE ATTIVITA' NONPROFIT
 fonte: ISTAT 2000

